

Instructions Battery POE 3.0



www.gevaelettronica.it

email@gevaelettronica.it

Portable device for alignment and testing of POE internet antennas

Set a static IP in the "GEVAelettronica" network wifi.

The hotspot is in bridge mode, transparent, everything which is on the LAN can be found on the Wi-Fi.

Read this article:

<http://gopro.com/support/articles/mobile-device-disconnects-from-the-cameras-wi-fi>

We recommend the Android app:

[EasyUbnt](#) and [JuiceSSH](#)

Android Hidden menu:

Turn Off Power Save Mode

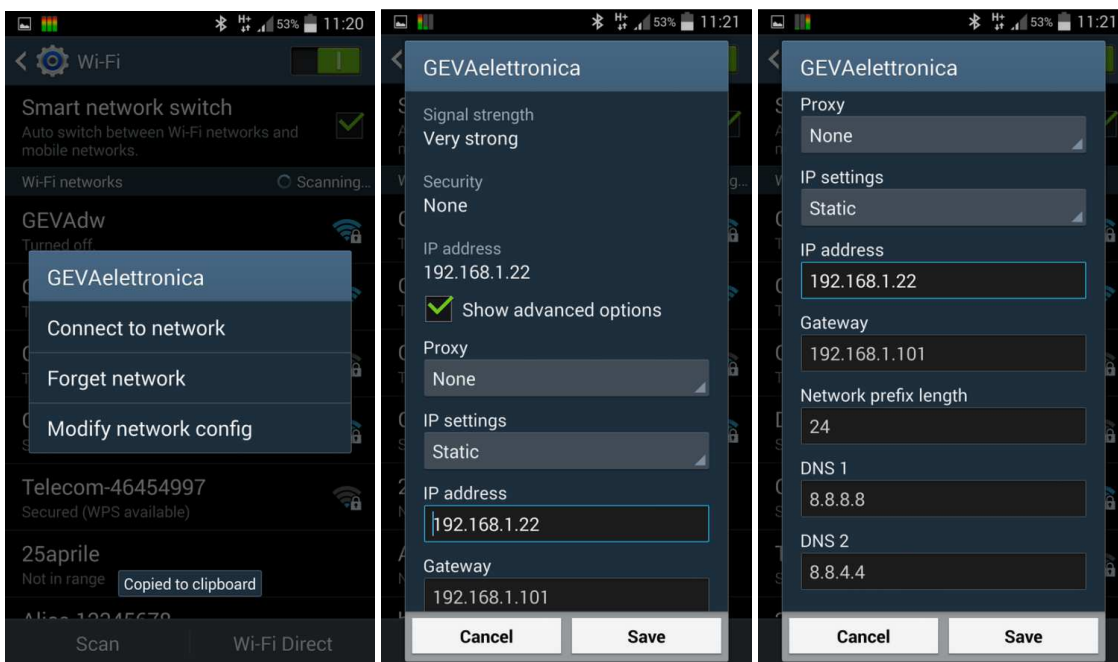
Go to the Dialer and dial *#0011#

or

AT&T/Bell/Rogers: *#3197328640#

T-Mobile and Verizon: *#22745927*, enable Hidden Menu, then use the code above, *#0011#

Now that you're in the proper menu, turn off the Power Save feature by pressing the "On" button. It'll change to "Off".



24 Vout 8W POE PowerBank 6000mAh
24 Vout 15W POE PowerBank 7000mAh High current battery

Charge indicator - 4 led

-Mini wireless AP supports WiFi 802.11 b / g / n wireless technology ,150Mbps wireless transmission rate , widely compatible 11b/11g/11n wireless LAN;

-Wireless relay (WiFi signal amplifier, hotspot access) WiFi hotspots the coverage area, achieved through access to WiFi hotspots WiFi signal amplification;

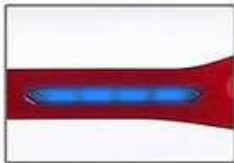


POE Switch

LAN & POE



Battery indicator, 4 leds



Battery Test Button



Off - Charge - Router



Charging input interface



Rechargeable lights



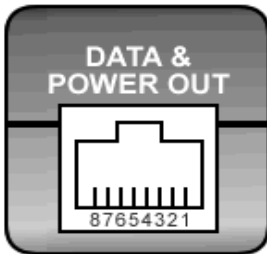
Status lights



USB output

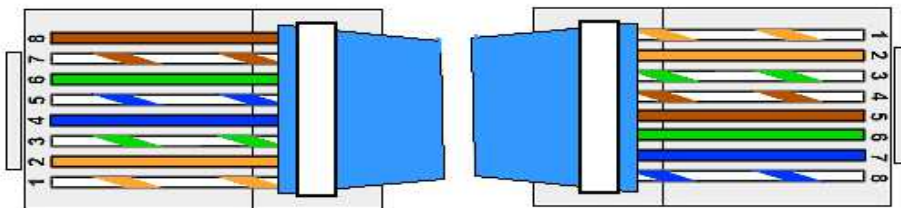


Pinout



- 1 Data Pair 1
- 2 Data Pair 1
- 3 Data Pair 2
- 4 + VDC
- 5 + VDC
- 6 Data Pair 2
- 7 - VDC
- 8 - VDC

For Cambium you have to create a LAN cable with reversed power pin.





www.gevaelettronica.it
email@gevaelettronica.it

Impostare l'ip fisso nella rete wifi "GEVAelettronica"

L'hotspot è in bridge, trasparente, tutto quello che c'è sulla lan lo trovate sul Wi-Fi.

Leggere questo articolo:

<http://gopro.com/support/articles/mobile-device-disconnects-from-the-cameras-wi-fi>

Si consigliano le app Android: [EasyUbnt](#) e [JuiceSSH](#)

Menù nascosto Android:

Spegnere il Power Save del WiFi

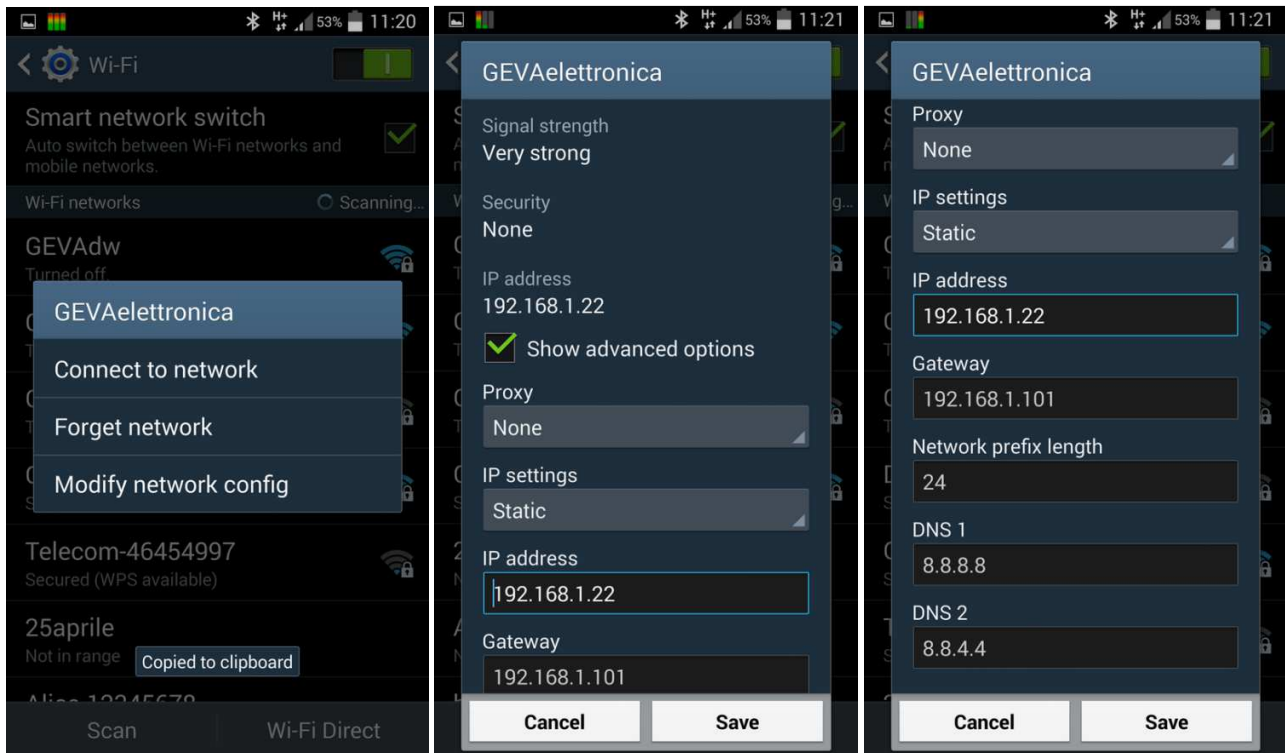
Dal telefono comporre il numero *#0011#

o

AT&T/Bell/Rogers: *#3197328640#

T-Mobile and Verizon: *#22745927*, abilita il menu nascosto, dopo si usa *#0011#

Ora che sei nel menu adeguato, disattivare la funzionalità di risparmio energia premendo il tasto "On". Lo cambierò in "Off".



Hadrware/Firmware

RAM 16mByte / 128Mbit

Flash 4Mbyte / 32Mbit

RT5350F chipset

IP device 192.168.1.10

ssh

username root

password gevach

config files on /etc/config/wireless

reset to factory type "firstboot" then "reboot"

upgrade firmware type "updategeva.sh"

Easy config true WinSCP <http://winscp.net/>

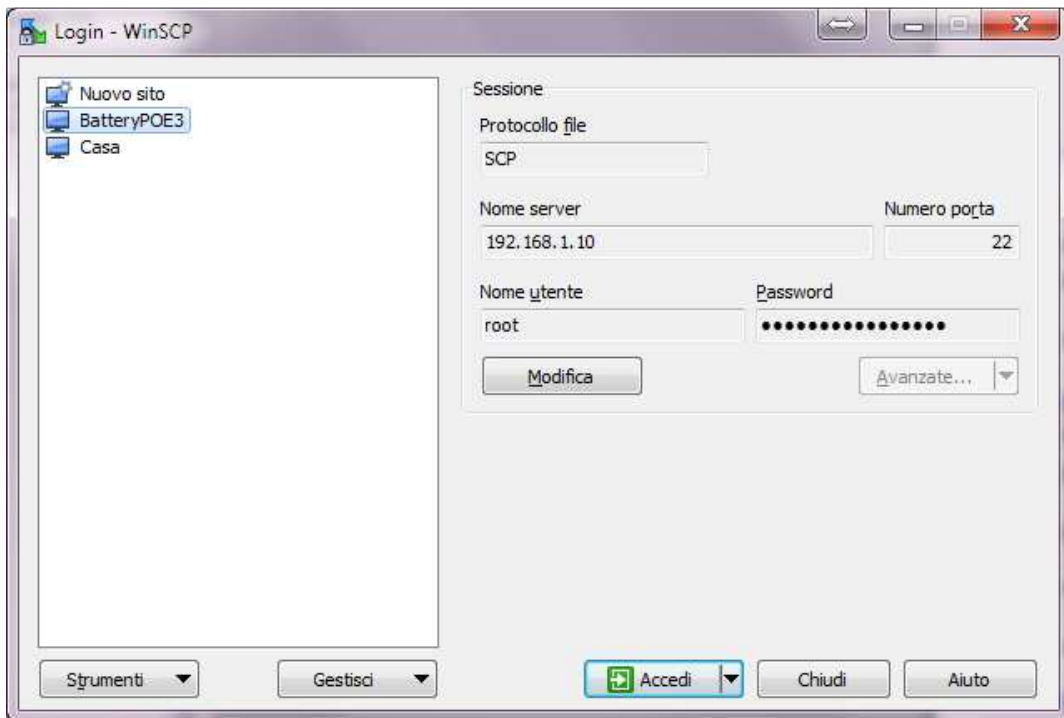
tftp

Switch on by keeping the reset switch pressed

Server 10.0.0.3

Kernal.bin

WiFi Configuring:



/etc/config/wireless

```
config wifi-device 'radio0'
    option type 'mac80211'
    option channel '11'
    option hwmode '11ng'
    option path 'platform/rt2800_wmac.0'
    option htmode 'HT20'
    list ht_capab 'GF'
    list ht_capab 'SHORT-GI-20'
    list ht_capab 'SHORT-GI-40'
    list ht_capab 'RX-STBC1'

config wifi-iface
    option device 'radio0'
    option network 'lan'
    option mode 'ap'
    option ssid 'GEVAelettronica'
    option encryption 'none'
```

If you want key edit in this way:

```
option encryption 'psk2'
option key 'secret passphrase'
```

Prepare the antenna with only one reboot. (android)

Assign at smartphone 192.168.1.22

Install [kWS html Server](#)

- Config Home directory where is your .cfg file, and 8080 Port.

Install [JuiceSSH](#)

- create Connection ssh 192.168.1.20 ubnt ubnt

- create Snippets:

```
wget http://192.168.1.22:8080/router.cfg -O /tmp/system.cfg
```

```
touch ct (if you want compliance test)
```

```
save
```