

GIGASYNC



0~12 PoE
gigabit

1800 Watt
load typ

GIGAKEY Ports
mapping

GPS Cambium
sync

AUX Sync
port

GigaSync is designed to power any type of device via standard Power over Ethernet or directly via terminal blocks. The Base Unit can manage up to 3 different cartridges, up to 12 output ports.

CPU

- Fast software and firmware update
- Internal storage of each parameter
- Dynamic web interface
- Critical event warning and logging
- Internet connection via integrated WiFi

Design

- SW / FW updates without service interruption
- Hot Swap
- Zero voltage drop from input to output and reduced self-consumption
- Input voltage detection and accurate measurement

Features

- 2 input terminal blocks for each cartridge
- Flexible integration of the management system
- The web interface shows the voltage, temperature and instantaneous value of the load.
- Remote management through web interface, SSH, SNMP integrated in base unit

Base Unit

Electrical Specifications

Operating voltage	+/- 21,4-57 VDC
Typical power	Main power supply maximum current: <0.7 A (with 3 cartridges on); Cartridge: up to 12 A each
Power connector	2x main power input, 2x1.31 mm ² cable terminal, 6x cartridge input, 2x3.3 mm ² cable terminal
Ethernet connectors	1x jack RJ45 shielded
GND connectors	4 mm lug
PoE mode	Passive
Transmission speed	10BaseT; 100BaseT
LED indicator	Synchronization, status and alarm
Active protection	Reverse polarity protection
Synchronization Method	Canopy Sync, Cambium Sync

SPD Specifications

Overvoltage spark	Not applicable
Peak current	Not applicable
Protection mode	Not applicable
SPD Technology	Not applicable

Environmental Specifications

Operating temperature	-20°C to +45°C
Humidity	5% - 90% non-condensing

Mechanical Specifications

Dimensions (LxWxD)	275 x 443 x 45 mm
Weight	8 kg full
Material	Varnished Iron

TERMS OF USE: This device must be professionally installed. As a warranty condition for the product, an Ethernet cable must be used shielded and grounded. All specifications in this document are subject to change without notice. For more information, visit www.9dot.it

Interface

Interface	<ul style="list-style-type: none">WiFi IEEE 802.11b/g/nFemale N-Type GPS antenna connectorWeb interface, ssh, SNMP, API10/100 BaseT RJ45, PoE PassiveRJ12 Sync In (uGPS & cnPulse compliant) RJ12 Sync OutOPT button
Status indicator	Front: Sync LED (green), Status LED (blue), Alarm LED (red) Rear: 7 led for presence of input voltage

Compliance & Warranty

Certifications	CE-FCC
Conformità RoHS	Yes
Warranty	consult with the nearest distributor



PoE Cartridge

Electrical Specifications

Operating Voltage	21,4-57 VDC
Typical power	up to 3A per port. 6A per cartridge (12A peak)
Power Connector	Not applicable
Ethernet connectors	8x shielded RJ45 (4x data in, 4x PoE + data)
GND connectors	Not present
PoE mode	PoE output mapping selectable via GigaKey
Transmission Speeds	10BaseT; 100BaseT; 1000BaseT
LED Indicator	Power status, port status, GigaKey status
Active Protection	Against short circuit, against over voltage, against overload
Synchronization Method	Not applicable

SPD Specifications

Spark Over Voltage	90V
Peak Surge Current	15 kA
Modes of Protection	All Lines (1-8) Protected (L-L) and (L-G)
SPD Technology	2 stages: TVS, GDT

Environmental Specifications

Operating Temperature	-20°C to +45°C
Humidity	5% - 90% non-condensing

Mechanical Specifications

Dimensions (LxWxD)	126 x 235 x 45 mm
Weight	1,5 kg
Material	Varnished Iron

Compliance & Warranty

Certifications	CE-FCC
Conformità RoHS	Yes
Warranty	consult with the nearest distributor



TERMS OF USE: This device must be professionally installed. As a warranty condition for the product, an Ethernet cable must be used shielded and grounded. All specifications in this document are subject to change without notice. For more information, visit www.9dot.it



PoE Cartridge / CS

Electrical Specifications

Operating Voltage	21,4-57 VDC
Typical power	up to 3A per port. 12A per cartridge with NEW GigaSync
Power Connector	Not applicable
Ethernet connectors	8x shielded RJ45 (4x data in, 4x PoE + data)
GND connectors	Not present
PoE mode	PoE output mapping selectable via GigaKey
Transmission Speeds	10BaseT; 100BaseT; 1000BaseT
LED Indicator	Power status, port status, GigaKey status, sync type
Active Protection	Against short circuit, against over voltage, against overload
Synchronization Method	Canopy Sync, Cambium Sync

SPD Specifications

Spark Over Voltage	90V
Peak Surge Current	15 kA
Modes of Protection	All Lines (1-8) Protected (L-L) and (L-G)
SPD Technology	2 stages: TVS, GDT

Environmental Specifications

Operating Temperature	-20°C to +45°C
Humidity	5% - 90% non-condensing

Mechanical Specifications

Dimensions (LxWxD)	126 x 235 x 45 mm
Weight	1,5 kg
Material	Varnished Iron

Compliance & Warranty

Certifications	CE-FCC
Conformità RoHS	Yes
Warranty	consult with the nearest distributor



TERMS OF USE: This device must be professionally installed. As a warranty condition for the product, an Ethernet cable must be used shielded and grounded. All specifications in this document are subject to change without notice. For more information, visit www.9dot.it



Terminal Cartridge

Electrical Specifications

Operating Voltage	21,4-57 VDC
Typical power	Up to 3A per port. 6A per cartridge (12A peak)
Power Connector	2x3.3 mm ²
Ethernet connectors	Not applicable
GND connectors	Not applicable
PoE mode	Not applicable
Transmission Speeds	Not applicable
LED Indicator	Power status, port status
Active Protection	Against short circuit, against over voltage, against overload control
Synchronization Method	Not applicable

SPD Specifications

Spark Over Voltage	90V
Peak Surge Current	15 kA
Modes of Protection	All Lines (1-2) Protected (L-L) and (L-G)
SPD Technology	2 stages: TVS, GDT

Environmental Specifications

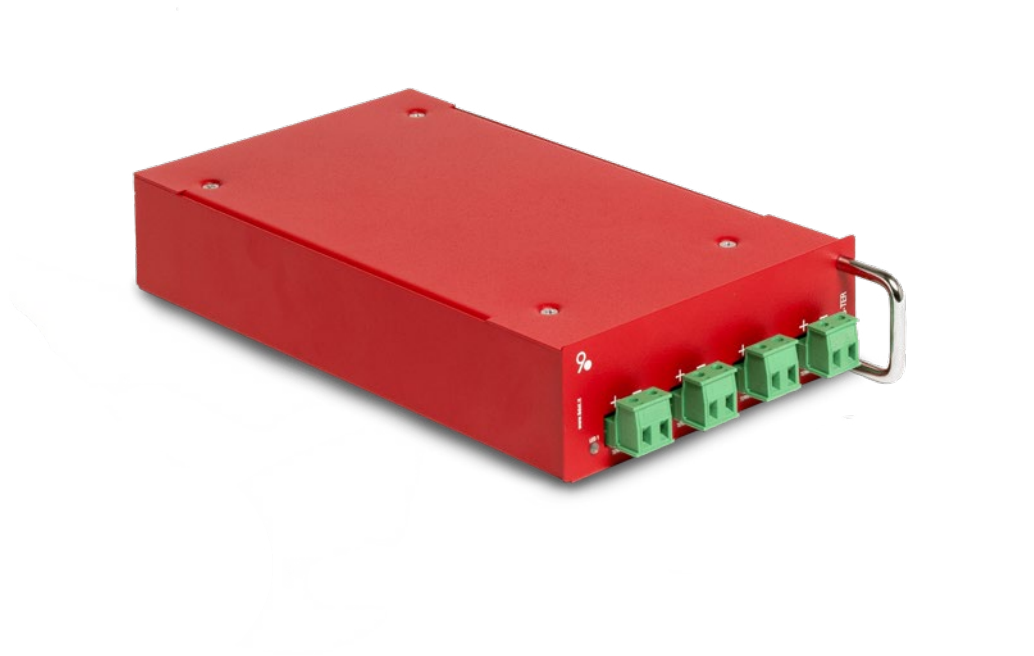
Operating Temperature	-20°C to +45°C
Humidity	5% - 90% non-condensing

Mechanical Specifications

Dimensions (LxWxD)	126 x 235 x 45 mm
Weight	1,5 kg
Material	Varnished Iron

Compliance & Warranty

Certifications	CE-FCC
RoHS compliant	Yes
Warranty	consult with the nearest distributor



TERMS OF USE: This device must be professionally installed. As a warranty condition for the product, an Ethernet cable must be used shielded and grounded. All specifications in this document are subject to change without notice. For more information, visit www.9dot.it



Terminal Cartridge / CS

Electrical Specifications

Operating Voltage	21,4-57 VDC
Typical power	Up to 3A per port. 12A per cartridge with NEW GigaSync
Power Connector	4x1.31 mm ²
Ethernet connectors	Not applicable
GND connectors	Not applicable
PoE mode	Not applicable
Transmission Speeds	Not applicable
LED Indicator	Power status, port status, sync type
Active Protection	Against short circuit, against over voltage, against overload
Synchronization Method	Cambium Sync

SPD Specifications

Spark Over Voltage	90V
Peak Surge Current	15 kA
Modes of Protection	All Lines (1-4) Protected (L-L) and (L-G)
SPD Technology	2 stages: TVS, GDT

Environmental Specifications

Operating Temperature	-20°C to +45°C
Humidity	5% - 90% non-condensing

Mechanical Specifications

Dimensions (LxWxD)	126 x 235 x 45 mm
Weight	1,0 kg
Material	Varnished Iron

Compliance & Warranty

Certifications	CE-FCC
RoHS compliant	Yes
Warranty	consult with the nearest distributor

GigAdapter: With the use of GigAdapter you can bring power and Cambium Sync from the 4-pole connector of the TER-CS to an RJ45 connector, so as to be able to use a standard network cable for the device



TERMS OF USE: This device must be professionally installed. As a warranty condition for the product, an Ethernet cable must be used shielded and grounded. All specifications in this document are subject to change without notice. For more information, visit www.9dot.it



GIGAKEY GS - K



PART NUMBER	GS-K-9.S	GS-K-AB	GS-K-B	GS-K-BR
Name on KEY	9.SYNC	A+B	B	Brp
PoE Mode	A + B reverse pol.	A+B	B	B reverse pol.
1,2 wires	DC +	DC +		
3,6 wires	DC –	DC –		
4,5 wires	DC –	DC +	DC +	DC –
7,8 wires	DC +	DC –	DC –	DC +
Cambium 450m	•			
Cambium 450i	•	•		
Cambium 450				•
IEEE 802.3af/at		•		
10/100Base-T PoE			•	
1000Base-T PoE	•	•		
Intracom / Siae	•	•		
Mikrotik/Ubiquiti		•	•	
Ceragon		•		

*These are just some of the devices that can work with GigaSync. The list is very long, if you want to know if your equipment can connect to GigaSync, do not hesitate to contact us

TERMS OF USE: This device must be professionally installed. As a warranty condition for the product, an Ethernet cable must be used shielded and grounded. All specifications in this document are subject to change without notice. For more information, visit www.9dot.it

